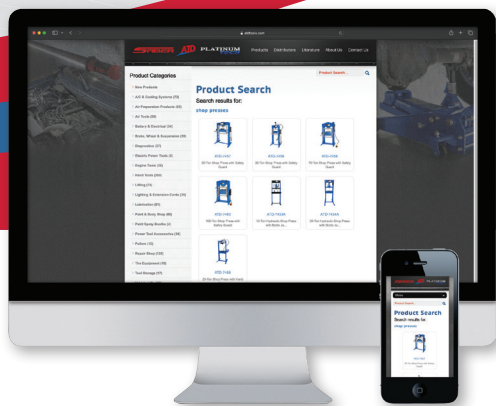




Since 1977, ATD Tools, Inc. has focused on providing professional automotive tools and equipment at competitive prices. After over forty years, we are still committed to providing the quality tools you need at a price you can afford.

Our tools and equipment are quality control tested at the manufacturer, by independent labs and in the field to ensure they meet the performance and durability professional mechanics demand today and will continue to demand for years to come.



**Visit us online at
www.atdtools.com**
to view the full line of products available.

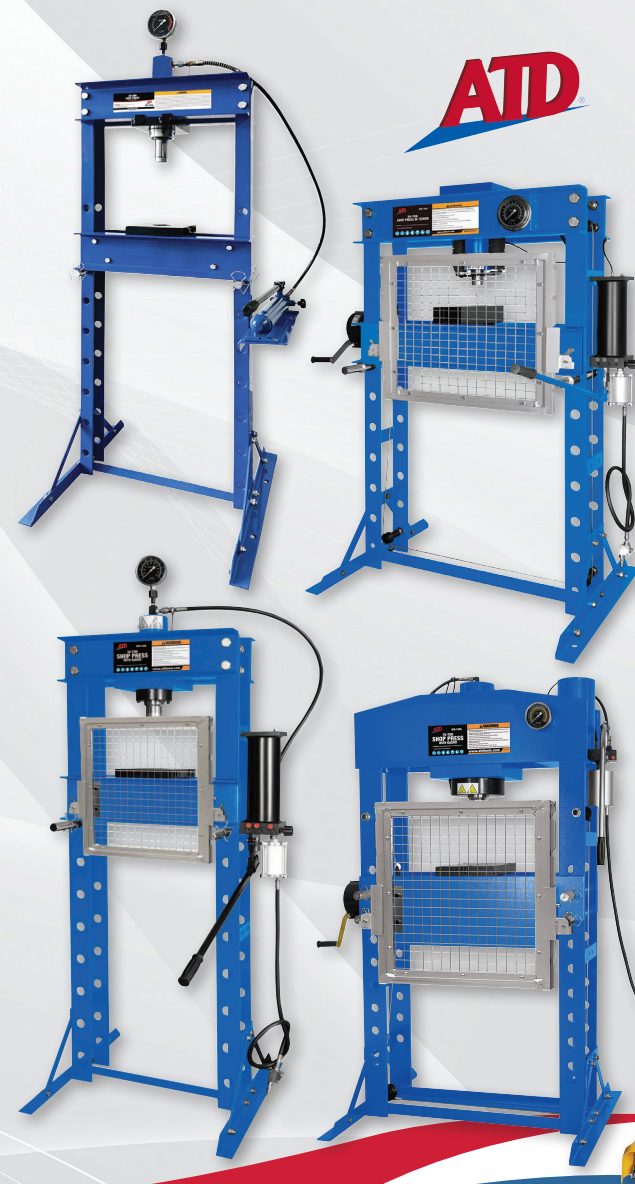
A pdf version of this catalog along
with other informational pdf files are available
online under the literature tab.

PLACE
STAMP
HERE



www.atdtools.com

©2025 ATD Tools, Inc. All rights reserved. Trademarks of companies mentioned
herein appear for identification purposes only and are the property of their respective
companies. Rev. 03.06.25



**SHOP
PRESSES**

ATD-7453A 12-TON HYDRAULIC SHOP PRESS WITH BOTTLE JACK

Features:

- Multi-position bed for work height adjustment
- Heavy steel, welded construction
- Meets or exceeds ASME PASE 2019 standards

Specifications:

- Capacity: 12 Tons
- Hydraulic Stroke: 5.1"
- Minimum Working Height: 0"
- Maximum Working Height: 24.8"
- Maximum Working Width: 16.5"
- Column (Bed) Width: 3"
- Bed Positions: 7
- Press Size: 20.47" W x 19.69" D x 51.8" H
- Shipping Weight: 100 lbs. (Box 1 - 51 lbs, Box 2 - 49 lbs)



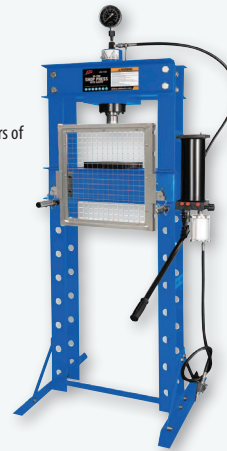
ATD-7456 30-TON SHOP PRESS WITH SAFETY GUARD

Features:

- Double-speed welded pump for improved efficiency and years of worry-free, dependable service
- Patented safety valve for longer service life
- Meets or exceeds ASME PASE 2019 standards

Specifications:

- Capacity: 30 Tons
- Hydraulic stroke: 6.75"
- Working Range: 2" to 40.6"
- Horizontal Ram Travel: 5.9"
- Bed Width: 18.13"
- Bed Depth: 5.9"
- Bed Positions: 8
- Press Size: 30.6" W x 27.56" D x 76.13" H
- Air Pressure: 110 to 120 psi



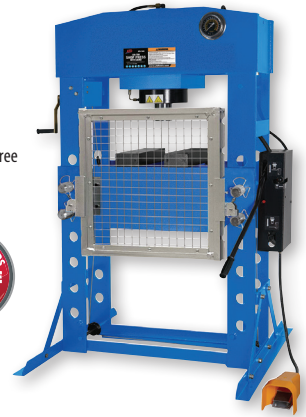
ATD-7463 100-TON SHOP PRESS WITH SAFETY GUARD

Features:

- Double-speed pump for improved efficiency
- Foot control air valve allows effortless, hands-free operation of air motor
- Meets or exceeds ASME PASE 2019 standards

Specifications:

- Capacity: 100 Tons
- Hydraulic stroke: 11.75"
- Working Range: 4.38" to 32"
- Horizontal Ram Travel: 10"
- Bed width: 31"
- Bed Positions: 6
- Press Size: 57.8" W x 39" D x 72.75" H
- Air Pressure: 0.75-0.85 MPa



ATD-7454B 20-TON HYDRAULIC SHOP PRESS WITH BOTTLE JACK

Features:

- Automatic ram retraction when jack valve is opened
- Multi-position bed for work height adjustment
- Rugged construction with rigid steel channel frames
- Heavy-duty reinforced angle steel bed provides a stable work area
- Meets or exceeds ASME PASE 2019 standards

Specifications:

- Capacity: 20 Tons
- Press Size: 27.5" x 26" x 59.19"
- Min. Working Spacet: 2.5"
- Max Working Space: 30.81"
- Ram Stroke: 6.31"
- Bed Positions: 8



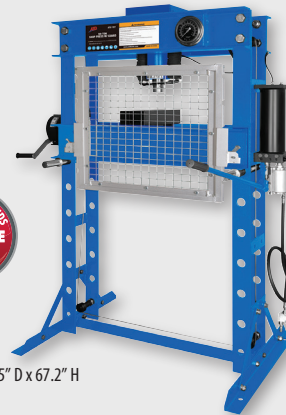
ATD-7457 50-TON SHOP PRESS WITH SAFETY GUARD

Features:

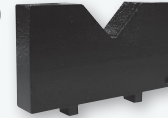
- Meets or exceeds ASME PASE 2019 standards

Specifications:

- Capacity: 50 Tons
- Hydraulic Stroke: 7.5"
- Minimum Working Height: 16.9"
- Maximum Working Height: 44.5"
- Working Area Width: 8.3"
- Column (Bed) Width: 32.5"
- Column (Bed) Gap: 8.62"
- Bed Positions: 6 (5.5" hole spacing)
- Press Size: 43.5" W (56.7" w/ pump & winch) x 31.5" D x 67.2" H
- Net Weight of Press: 662.2 lbs.
- Net Weight of Guard: 8.8 lbs.
- Gross Weight with Guard: 756.8 lbs.



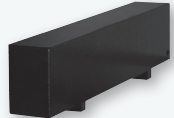
ATD-73030 30-TON PRESS BLOCK



Features:

- Anti-slip style block - 9.8" x 4.4" x 1.5"
- Made of high strength A36 steel
- Tested to meet or exceed capacity requirements
- For use with presses up to 30-ton capacity

ATD-73050 50-TON PRESS BLOCK



Features:

- Anti-slip style block - 13.8" x 2" x 3.4"
- Made of high strength A36 steel
- Tested to meet or exceed capacity requirements
- For use with shop presses up to 50-ton capacity

ATD-73075 75-TON V BLOCK



Features:

- Anti-slip style block - 11.6" x 5.1" x 5.5"
- Made of high strength A36 steel
- Tested to meet or exceed capacity requirements
- For use with shop presses up to 75-ton capacity

ATD-73100 100-TON V BLOCK



Features:

- Anti-slip style block - 13.8" x 5.1" x 6.7"
- Made of high strength A36 steel
- Tested to meet or exceed capacity requirements
- For use with shop presses up to 100-ton capacity

ATD-7455A 25-TON SHOP PRESS WITH HAND PUMP

Features:

- Multi-position bed for work height adjustment
- Heavy steel, welded construction
- Hydraulic system is protected from internal damage by a by-pass mechanism
- Meets or exceeds ASME PASE 2019 standards

Specifications:

- Capacity: 25 Tons
- Ram Stroke: 6"
- Minimum Working Height: 2-1/2"
- Maximum Working Height: 34-1/8"
- Maximum Working Width: 20"
- Column (Bed) Width: 4"
- Bed Positions: 8
- Frame Size: 28" W x 28" D x 59" H



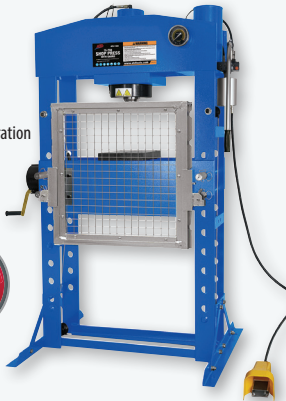
ATD-7458 75-TON SHOP PRESS WITH SAFETY GUARD

Features:

- Includes a set of non-slip steel blocks for safer operation
- Includes protective work guard for added safety
- Meets or exceeds ASME PASE 2019 standards

Specifications:

- Capacity: 75 Tons
- Hydraulic stroke: 9.88"
- Working Range: 6.63" to 34.75"
- Horizontal Ram Travel: 10.25"
- Bed width: 31.5"
- Bed depth: 10.9"
- Bed inner dimensions (effective area): 9.9"
- Bed Positions: 8
- Press Size: 51.2" W x 31.5" D x 74.63" H
- Air Pressure: 110 to 120 psi



ATD-7376 7-PC. SHOP PRESS ACCESSORY KIT

ATD-7378 9-PC. SHOP PRESS ACCESSORY KIT

Features:

- ATD-7376: (3) Punches - 1/2", 1" and 2"
- ATD-7378: (5) Punches - 1/2", 3/4", 1", 1-1/2" and 2"
- Precision machined cold-finished 1018 steel
- Yellow zinc plated for durability
- (2) Steel press plates - 14" x 3" x 1"
- Bearing shield
- Quick-change adapter
- For use with shop presses up to 50-ton capacity

